



Q&A

What's new with Windows 10, the 2004 Spring Feature Update – Session 2, Settings Bill James, APCUG Advisor, Region 8 Member, Speakers Bureau

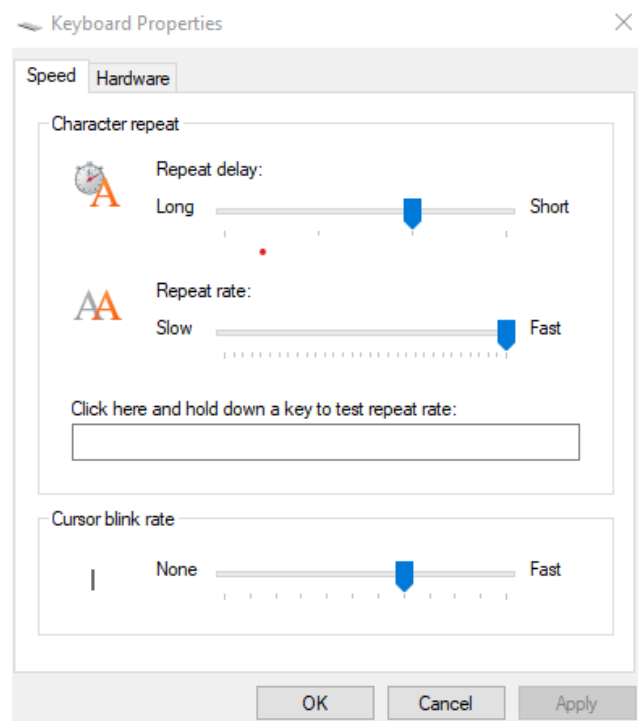
MarilynM - When would you use 3D Viewer?

Answer: It lets you view 3D models and animations in real-time. You can uninstall it by clicking on Start > right-clicking on the title and clicking on Uninstall

Carleen - How do I make a keyboard less sensitive?

Answer: The sensitivity of the keyboard can be changed within Windows. Press Windows key + R > Type: control > press Enter > Keyboard.

Use the slider to adjust the repeat delay and repeat rate.



Thomas - How do you delete fonts?

Answer: Settings > Personalization > Fonts > Select Font > Click Uninstall

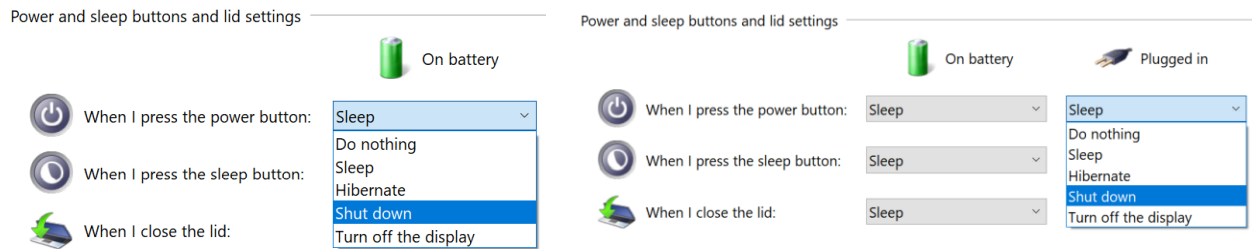
Follow-up question - When I try to delete some fonts, I get a message that states: "Cannot be deleted because it is a protected system font."

The font trying to be deleted is 'Javanese'. The response is correct, although the delete button is visible and gives the impression that the font can be deleted it cannot. Clicking on the button gives you a confirmation box to delete the font at which time you get a

message: "Cannot be deleted because it is a protected system font." I believe this to be a bug, the initial delete button should be grayed out. It should be reported to Microsoft.

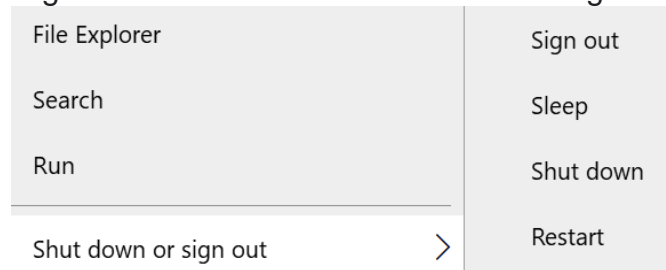
MarilynR - Lately, when I want to shut down my computer, and I click the "start" button, nothing happens. I have to use "Ctrl, alt, del" to shut down. What's the problem?

Answer: If the Start menu does appear and when you click on the shutdown button nothing happens, the problem might be your **settings**. The power button can be configured to do several things. You can easily change the settings by doing the following: Press Windows Key + S and enter power settings. The select "Choose what the Power Buttons do."



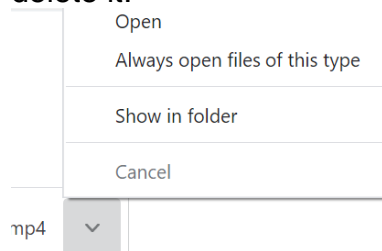
OR, if you want to Restart, try these steps...still 3 mouse clicks.

Right-click Start > Click Shut down or sign out > Click your choice of shutting down



MarilynM - Many times when someone sends me a video in an email it won't let me play it without downloading it. Can this be fixed?

Answer: Gmail – Does not have an option for viewing a video without downloading it. All of my Gmail downloads go to my Download folder; I click the up arrow by the name of the file on my taskbar, choose Open this folder (Downloads), play the video and delete it.



Ron - Why send activity history to Microsoft?

Answer: If you've signed into your device with a Microsoft account and enabled the setting to send Microsoft your activity history, Microsoft uses your activity history data to enable cross-device experiences. So even when you switch devices, you will be able to see notifications about your activities and resume them.

Thanks to **Joe** - Sending usage info to MS is supposed to be anonymous. The intention is for MS to understand how people use their PC/Windows, what fails/crashes, what is popular. It helps MS make improvements in future updates.

Edi - When I move an open window to the edge of the monitor it automatically becomes full screen. Where can I change that setting?

Answer: This is the Snap feature, first introduced in Windows 7 and upgraded for Windows 10.

<https://www.windowscentral.com/how-use-snap-assist-windows-10-0>

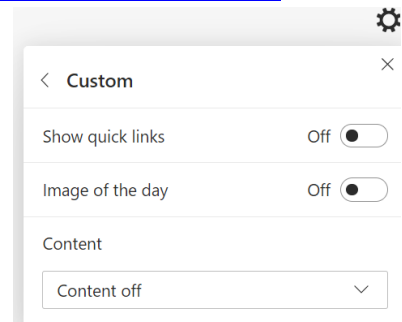
How to Disable Snap Assist in Windows 10

<https://www.howtogeek.com/365043/how-to-disable-snap-assist-in-windows-10/>

Ellie - How do I turn off MS mail (or add Thunderbird). Also, how do I get rid of news feeds and other items in Edge and Bing?

Answer:

News Feeds/Content – Click on the Gear > Page Layout > Custom > Turn both buttons and Content to off Close and restart Edge.



Thunderbird - You cannot add Thunderbird mail to Win Mail. Thunderbird is not an email account or domain, but an email application similar to MS Mail. Both applications allow you to add as many email accounts as you choose. A domain is the name following the @ sign i.e. aol.com, att.com, or yahoo.com. In order words to add an email account, you go to settings and select add. Enter the email address and password and it will set that address to send and receive any email that is sent to or from it. Most new email applications use a protocol called MAPI to set it the application to send and receive email. For example, you could have a Yahoo account, an ATT account, and a AOL account that would download to the Thunderbird application as well as send from it.

JohnS - Does data usage include both the upload and download data?

Answer: Yes, if you set a Wi-Fi network as metered, Windows 10 won't automatically install app updates and download data for live tiles when you're connected to that network.

Peter - Have you had any problems with version 2004?

Answer: Not yet.

Ellie - Is Repair for an app only in Control Panel, Programs 7 Features? It's not in Settings, Apps, or is it in the 2004 update?

Answer: Settings > Apps & Features > Select App to fix > Select Advanced Options > Select repair (not all Apps have this option)

Murray - Is the full-blown Ubuntu now available (with GUI for all applications using the screen, such as file browser, etc.) available (even if for insiders)? If so, how do I get it? If not, when will it be available?

Answer: Thanks to Ralph - <https://docs.microsoft.com/en-us/windows/wsl/install-win10>

Joe - Version 2004: having a USB connect issue with my phone.

Answer: I use Bluetooth and the Your Phone app with my Samsung. Please send me more info via Judy.

MarilynM – After an update, Outlook will not open to access my Gmail. How/where do I troubleshoot this?

Answer: I'd set it up again. Open Outlook app > choose File > Add Account. On Auto Account Setup page > enter your name, your Gmail address and your Gmail password > click Next > click Finish.

Ron – How do you show all activity for the day on your screen?

Answer: Press Windows key + Tab, scroll through your timeline to the applicable date.

Carol - I recently got an email from Microsoft saying my OneDrive is full. What do I need to do about that, without buying more space?

Answer: You have 5GB of free space. To free up space, you can delete specific files, folders, or photos. If you don't want to do that, you can purchase more space – 100GB \$24/year.

1. Go to the [OneDrive website](#). You might need to sign in with your Microsoft account, or your work or school account.
2. Select the files or folders you want to delete by pointing to each item and clicking the circle checkbox that appears. (The left image below shows items in List view, the right image shows items in Tiles or Photos view.)

James - What is a network extender?

Answer: Your router should be in a central location in your house. If that's not possible, a Range Extender, Wi-Fi Booster, or Wi-Fi Extender is a device that repeats the wireless signal from your router to expand its coverage to dead spots. Many can be plugged directly into an electrical socket. Another option is a mesh router.

<https://www.cnet.com/news/wi-fi-range-extender-vs-mesh-router-which-one-is-best-for-your-home-network/>

MarilynM - Why do people have/use a VPN?

Answer: How-To Geek - In very simple terms, a VPN connects your PC, smartphone, or tablet to another computer (called a server) somewhere on the internet and allows you to browse the internet using that computer's internet connection. So, if that server is in a different country, it will appear as if you are coming from that country, and you can potentially access things that you couldn't normally.

<https://bit.ly/3dVbEXR>

Edi - When I move an open window to the edge of the monitor it automatically becomes full screen. Where can I change that setting?

Answer: This is the Snap feature, first introduced in Windows 7 and upgraded for Windows 10.

<https://www.windowscentral.com/how-use-snap-assist-windows-10-0>

How to Disable Snap Assist in Windows 10

<https://www.howtogeek.com/365043/how-to-disable-snap-assist-in-windows-10/>

Administrator Account vs. Standard User

<https://www.windowscentral.com/how-change-user-account-type-windows-10>