

# What's new with Windows 10, the 2014 Spring feature update – Session 1



**Bill James, APCUG Advisor, Region 8; Member, Speakers Bureau; VP, Computer Club of Oklahoma City**

The release date is May 28th

- Have you customized your Start menu, Taskbar, and Notifications?
- What are those Hidden Icons?
- How can I immediately get back to my Desktop?
- Can you easily see your mouse pointer?
- How about the Display text size?
- We'll also take a look at the powerful Search options.

## How to customize Start Menu in Windows 10

The **Start Menu** is back in **Windows 10**, and does it look great! Not only is it good to look at, but it is also now supercharged and lets you do a lot more. Let us have a look at some of its features and see how we can personalize our Windows 10 experience, by customizing the Start Menu.

### Customize Windows 10 Start Menu



As is expected, the Start Menu, or simply **Start**, gives you access to your User Documents, Oft-used and pinned software and apps, File Explorer and so on. Something notably new here is that the Start now includes Live Tiles too.

## You can: (Settings > Personalization > Start Menu)

1. Remove the frequent items from Start Menu.
2. You can disable content suggestions that Microsoft may show at the top of the start menu from time to time; mostly it is related to Windows store apps that Microsoft thinks you will be interested in
3. You can remove the New list by turning off Show recently added apps group. This, however, will not prevent *All Programs* from showing New under the option and once you expand *All Programs*. The new items will still show New under the item name. The option "Show Recently Added Apps Group" only removes the folder or group that contains a list of newly added apps. The group is useful when you can't find your programs in *All Programs*, but when you expand it, you will find it mighty long to get confused among the list it produces
4. From the same window, you can opt to Turn Off the list of recently opened items; remember that it is different from recently added as the latter shows a list of recently installed programs and the recently opened items shows a list of documents, spreadsheets, image files, sound or video files. In short, this option lets you see the list of data files, while the option mentioned in number 3 above, shows the list of recently added or installed programs
5. Finally, you can get the Start menu to be shown full screen; There is no need for regular users to show the Start menu in full screen but for those who are using tablets and mobile devices.
6. [Show Color on Start Menu and Taskbar](#)
7. [Pin any system setting to the Start.](#)

Let us now look at the Start Menu and some of its settings in detail.

### Live Tiles & Groups

The Start now includes Tiles. You can pin Tiles to Start. If the app is programmed to display Live Tiles, you will see Live Tiles in your Start Menu too. You can pin apps, program shortcuts, files, folders, and even the Drive to Start. Simply right-click on the item and select Pin to Start. Drag and drop them around, to arrange them in Groups, and [give the Groups useful names](#).

The typical context menu for each Tile would include:

- Unpin from Start
- Pin to taskbar
- Uninstall

- Resize – Small, Medium, Wide, Large
- Turn Live Tile off.

You can move the tiles, resize them and even group them. You can move items from the left side to the right side of Start and display them as Tiles. You can also uninstall apps from the Start itself, using its context menu.

### **Give it the Classic Windows 7 look (Not Recommended)**

If you wish, you can **right-click on each Tile and unpin it** to make the Start look compact, giving it the classic look.

### **Resize Start or make it display fullscreen**

You can resize the Start Menu by dragging its right and top edge. You can even [display Start Menu in full screen](#), via Settings > Personalization > Start.

### **Most used Programs**

The Start displays the Most used programs. This gives you easy access to apps and software that you use frequently. But if you wish, you can [remove this Most Used list](#) via Settings > Personalization > Start

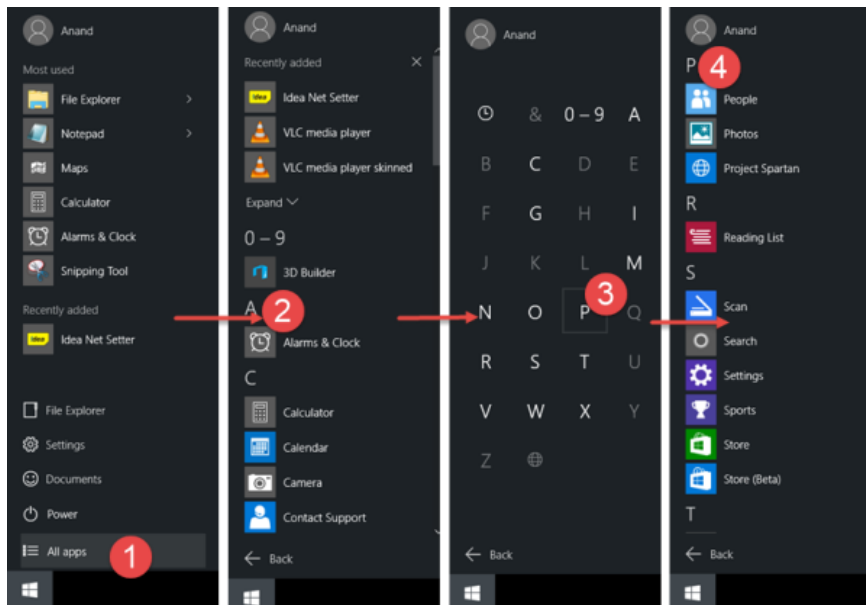
### **Recently added software & apps**

If you installed new apps or software, they would get listed here. You can [show or hide the Recently added apps group](#).

### **Content Suggestions**

Start will also recommend apps and content to you, which it thinks may interest you. However, you can disable this feature if you find it irritating, via Settings > Personalization > Start.

## Quick navigation to the apps list



Open Start, click on All apps. Next click on any alphabet – say A. You will see the alphabets displayed. Click on one of them and you will be taken to the apps starting with that alphabet.

## Hidden Icons on Taskbar – Taskbar settings > Notification area > Select which icons appear on the taskbar

Turn System icons on or off > clock, volume, network, etc

Getting back to Desktop (right-click > View desktop)

Taskbar Customization right click on the taskbar and select settings

Notification Customization, Search for notification settings

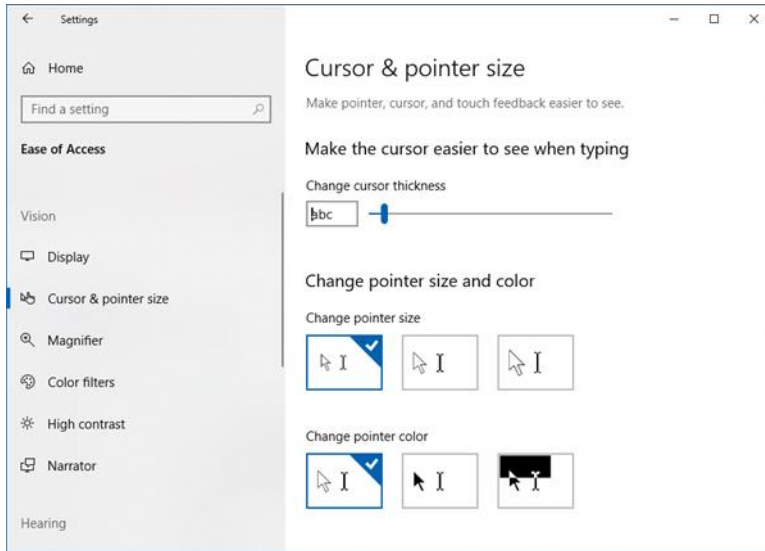
---

## Change Mouse Cursor Thickness & Blinking Rate in Windows 10 (Ease of Access)

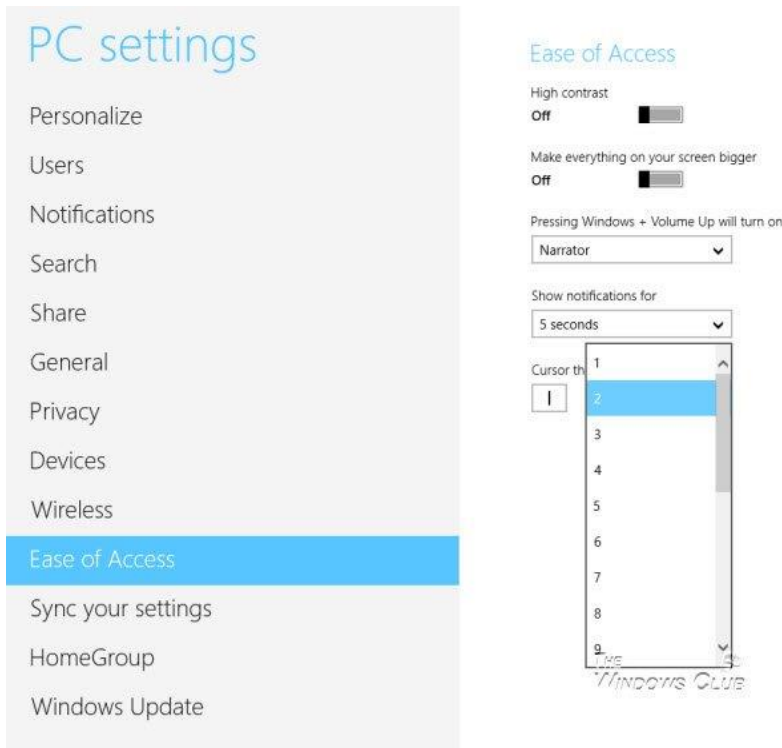
Windows 10 includes [accessibility options](#) and programs that make it easier to see, hear, and use your computer. This article will tell you how to make your Windows 10/8 blinking cursor thicker so that it is easier to see it.

## Make cursor thicker in Windows 10

To change the thickness of the cursor in **Windows 10**, open Settings > PC Settings. Click on Ease of Access.



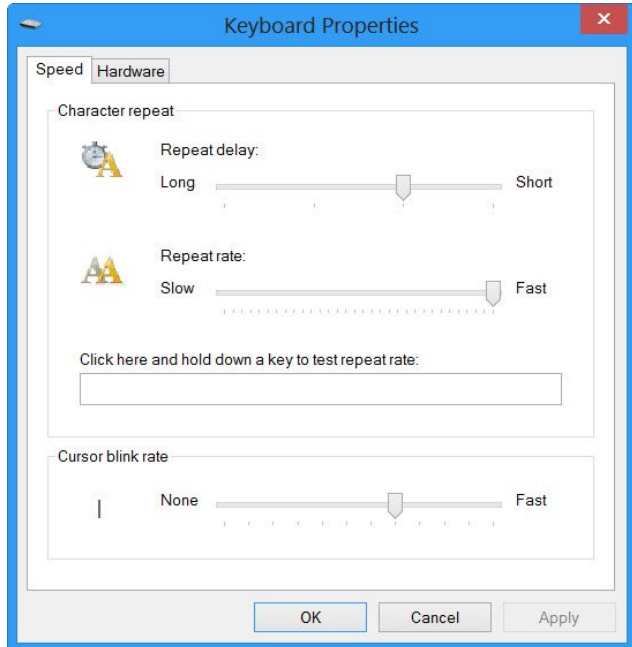
Use the Slider to change the cursor & pointer thickness or size.



Under Cursor thickness, from the drop-down menu, change the figure '1' to any greater number you are comfortable with. You will be able to preview the cursor thickness there itself.

## Make cursor blink faster

If you wish to make the cursor blink faster or change its Repeat Rate or Delay, you can do so by opening Control Panel > Keyboard Properties. You will find the settings under the Speed tab.



Change the settings according to your needs and click Apply/OK. That is all you need to do.

It will now make the cursor easier to find, and this could be quite useful. Some of you may also want to [turn on high contrast themes in Windows](#) – especially if you face some disabilities.

### Search Options:

**Search box on Taskbar**

**Search box in Settings**

**Search box in File Manager**